



# R-Loc<sup>®</sup>

One Stop Solution for all Clamping Requirements....



**Great North Technologies Incorporated**

[www.greatnorthtech.com](http://www.greatnorthtech.com) / [customerservice@greatnorthtech.com](mailto:customerservice@greatnorthtech.com)

**Customer Service;** 514-620-3724 / **Fax;** 514-620-3086 / **Sales;** 514-575-8044  
 623 – 3484 Sources Boulevard, Dollard Des Ormeaux, Québec H9B 1Z9 Canada

**R-LOC® Heritage**

Signals

Telecom

Sub-Sea

Utilities

Power Gen

Oil & Gas



**Shipping & Cargo**



**Transportation**



**Military**



**Great North Technologies Incorporated**

[www.greatnorthtech.com](http://www.greatnorthtech.com) / [customerservice@greatnorthtech.com](mailto:customerservice@greatnorthtech.com)

**Customer Service;** 514-620-3724 / **Fax;** 514-620-3086 / **Sales;** 514-575-8044  
623 – 3484 Sources Boulevard, Dollard Des Ormeaux, Québec H9B 1Z9 Canada

## RC Series Strapping Systems

- Used in less demanding applications where minimizing leaks and longevity are not critical
- Lock with impact from a hammer using a conical punch
- Double wrapped using Stainless Steel strap
- Manufactured with thicker Stainless Steel buckles
- Not recommended for use with fittings that may crack as a result of impact



<b>Preformed Centre Punch Clamps - Band and Buckle Type</b>						
<b>Material Grade / Part Number</b>			<b>Dimensions (mm)</b>			<b>Quantity</b>
<b>SS201</b>	<b>SS304</b>	<b>SS316</b>	<b>Thickness</b>	<b>Width</b>	<b>Diameter</b>	
RCPB1020	RCPF1020	RCPE1020	<b>0.65</b>	<b>10</b>	20	100/box
RCPB1035	RCPF1035	RCPE1035			35	
RCPB1625	RCPF1625	RCPE1625		<b>16</b>	25	
RCPB1632	RCPF1632	RCPE1632			32	
RCPB1638	RCPF1638	RCPE1638			38	
RCPB1644	RCPF1644	RCPE1644			44	
RCPB1651	RCPF1651	RCPE1651			51	
RCPB1657	RCPF1657	RCPE1657			57	
RCPB1664	RCPF1664	RCPE1664			64	
RCPB1670	RCPF1670	RCPE1670			70	
RCPB1676	RCPF1676	RCPE1676			76	
RCPB1689	RCPF1689	RCPE1689			89	
RCPB16102	RCPF16102	RCPE16102		25/box	102	
RCPB16114	RCPF16114	RCPE16114			114	
RCPB16127	RCPF16127	RCPE16127			127	
RCPB16152	RCPF16152	RCPE16152			152	
RCPB16165	RCPF16165	RCPE16165			165	
RCPB16178	RCPF16178	RCPE16178			178	
RCPB16203	RCPF16203	RCPE16203			203	



RR-B04 (Bantam Tool)



RR-H05 (Cable Tie Hook)



RR-R06 (Ratchet Tool)

### Great North Technologies Incorporated

[www.greatnorthtech.com](http://www.greatnorthtech.com) / [customerservice@greatnorthtech.com](mailto:customerservice@greatnorthtech.com)

**Customer Service;** 514-620-3724 / **Fax;** 514-620-3086 / **Sales;** 514-575-8044  
623 – 3484 Sources Boulevard, Dollard Des Ormeaux, Québec H9B 1Z9 Canada

## PJ Series Strapping Systems

- Ready to use pre-cut band, assembled with Jaw type buckles.
- Time saving & cost effective solution for large projects.
- Standard length & loop diameters available allowing fast installation and less scrap material.
- Available in high tensile SS201 as standard range, SS304, SS316 & SS430 can be offered on request.
- Jaw type Pre-cut straps also available in 9.5mm and 16mm widths on request



<b>Pre-cut Assembled Bands – Jaw Type Buckle</b>							
<b>Part Number</b>	<b>Material Grade</b>	<b>Dimensions</b>					<b>Quantity</b>
		<b>mm</b>		<b>cm</b>	<b>Diameter (mm)</b>		
		<b>Width</b>	<b>Thickness</b>	<b>Length</b>	<b>Single Wrap</b>	<b>Double Wrap</b>	
PJ12A207	SS201	12.7	0.76	51	102	51	25/box
PJ12A247				61	127	64	
PJ12A277				69	152	76	
PJ12A347				86	203	102	
PJ12A417				104	254	127	
PJ12A487				122	305	152	
PJ12A557				140	356	178	
PJ12A697				175	457	229	
PJ12A767				193	508	254	
PJ12A907				229	610	305	
PJ19A207		19.0		51	102	51	
PJ19A247				61	127	64	
PJ19A277				69	152	76	
PJ19A347				86	203	102	
PJ19A417				104	254	127	
PJ19A487				122	305	152	
PJ19A557				140	356	178	
PJ19A697				175	457	229	
PJ19A767				193	508	254	
PJ19A907				229	610	305	

### Great North Technologies Incorporated

## PW Series Strapping Systems

- Ready to use pre-cut band, assembled with Wing type buckles.
- Time saving & cost effective solution for large projects.
- Standard length & loop diameters available allowing fast installation and less scrap material.
- Available in high tensile SS201 as standard range, SS304, SS316 & SS430 can be offered on request.

<b>Pre-cut Assembled Bands - Wing type Buckle</b>							
Part Number	Material Grade	Dimensions					Quantity
		(mm)		cm	Diameter (mm)		
		Width	Thickness	Length	Single Wrap	Double Wrap	
PW06A105	SS201	6.5	0.5	25	50	24	50/box
PW06A165				40	88	38	
PW06A195				48	127	63	
PW06A265				68	177	88	
PW06A345				86	228	114	
PW09A166		9.5	0.65	40	88	38	
PW09A446				112	305	152	
PW12A187		12.7	0.76	45	102	50	
PW12A317				78	203	101	
PW16A217		16	0.76	53	127	63	
PW16A567				142	406	203	
PW16A697				508	508	175	
PW19A247		19	0.76	60	152	76	
PW19A377				93	254	127	
PW19A507				127	355	177	
PW19A627				157	457	228	

Cable Tie Gun



Crimping Tool



Cable Tie Pliers



### Great North Technologies Incorporated

[www.greatnorthtech.com](http://www.greatnorthtech.com) / [customerservice@greatnorthtech.com](mailto:customerservice@greatnorthtech.com)

Customer Service; 514-620-3724 / Fax; 514-620-3086 / Sales; 514-575-8044  
623 – 3484 Sources Boulevard, Dollard Des Ormeaux, Québec H9B 1Z9 Canada

**Tools for R-LOC® Products**

Part No.	Description	Application	PN Series
RR-G01	Automatic Cable Tie Gun	Cable Ties	B, L & R
RR-P02	Cable Tensioning Pliers		
RR-H05	Cable Tie Hook		
RR-B04	Bantam Tool	Pre-Cut Straps	RC, PJ & PW
RR-T03	Buckle Crimping Tool	Buckles	RC
	Band Ratchet & Cutting Tool	Bands	RS
RR-R06	Ratchet Tool	Bands & Straps	

**RR-G01 Cable Tie Automatic Gun.**

- Easy to install automatic gun, with single hand operation.
- Cable tie side entry for immediate positioning of tie & tool.
- Controlled tension & fully adjustable to achieve desired tension.
- Easy and automatic removal of excess tie length with auto cut-off.

**RR-P02 Cable Tensioning Pliers**

- Cable tie side entry for immediate positioning of tie & tool.
- Hand operated tool with installer controlled tension and cut-off.
- Easy removal of excess tie length.
- Lever actuated cut-off.
- Rugged, lightweight, easy to operate providing a mechanical advantage.

**RR-T03 Band ratchet and cutting / Buckle crimping Tool.**

- Features a spring-loaded gripper lever for more efficient band handling.
- Easy to use spindle handle to ratchet band through buckle.
- Cut-off Lever is vinyl coated for easy cutting of band.

**RR-B04 Bantam Auto Gun Tool.**

- Light weight gun handle configuration to tighten Strap or Tie.
- Cut-off Lever for easy cutting of Strap or Tie.

**RR-H05 Cable Tie Hook.**

- Used as a hand tool to tighten B, L & R Series Cable Ties.
- Insert hook into hole at end of tie and pull.

**RR-R06 Ratchet Tool.**

- Multipurpose heavy duty ratchet for Bands and Straps.

RR-G01



RR-P02



RR-T03



RR-B04



RR-H05

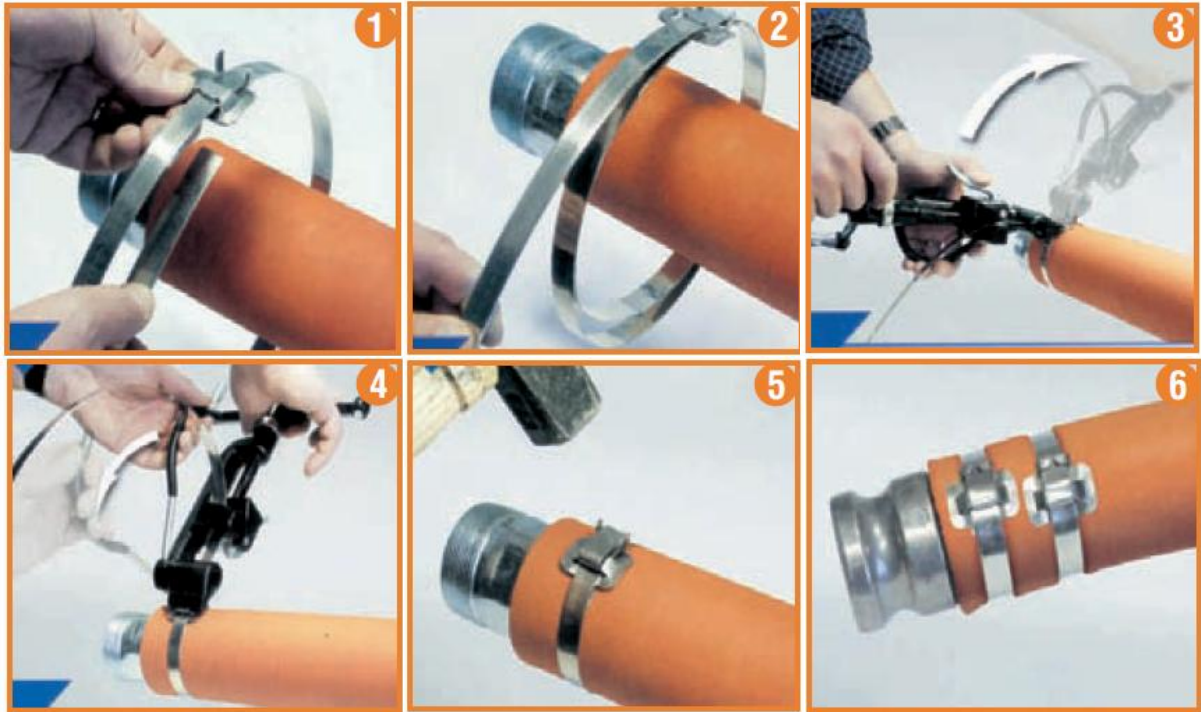


RR-R06



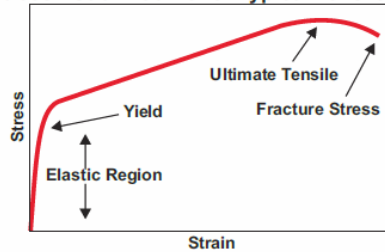
**Great North Technologies Incorporated**

## Clamping System Band & Buckle Application and Installation Instructions



- 1) Pull Buckle on band, ears pointing towards end of band. Form the clamp, holding band on band. Then push the buckle back over the doubled band, bending the end around 1" under the buckle.
- 2) Double wrap the band for a heavier job.
- 3) Place the band in the tool, push down on the gripper with the thumb, and tension the clamp by turning the handle. The maximum tension is achieved when the band finally stops moving through the buckle. Once the required tension has been applied, roll the tool over the buckle and simultaneously, reverse the handle carefully through half a turn to avoid snapping or breakage. There is no loss of tension if the handle is reversed very little.
- 4) Pull on the cutter lever ensuring that the band is cut off at the correct length.
- 5) Hold the stub of the band with the thumb and hammer it flat over the bridge of the buckle. Complete the clamp formation by hammering the ears over the stub.
- 6) Desired Result as shown above.

Stress - Strain Curve for Typical Tensile Test



AISI Type Number		SS 430	SS 201	SS 304	SS 316
<b>Specification - Equivalents</b>	UNS	S4300	S20100	S30400	S31600
	BS	430S17	301S21	304S31	316S31
	Euronorm	W. No: 1.4016 Name: X8 Cr17	W. No: 1.4310 Name: X10CrNi18-8	W. No: 1.4301 Name: X5CrNi18-10	W.No: 1.4401 Name: X5CrNiMo17-12-2
	Swedish	SS2320	SS2331	SS2332	SS2347
	JIS	SUS430	SUS201	SUS304	SUS316
<b>Composition</b>	Carbon - % C	0.12 Max	0.15 Max	0.07 Max	0.08 Max
	Manganese - % Mn	1.00 Max	5.5 - 7.5	2.00 Max	2.00 Max
	Phosphorous - % P	0.04 Max	0.06 Max	0.045 Max	0.045 Max
	Silicon - % Si	1.00 Max	1.00 Max	0.75 Max	0.75 Max
	Sulphur - S	0.03 Max	0.03 Max	0.03 Max	0.03 Max
	Chromium - % Cr	16.00 - 18.00	16.00 - 18.00	17.50 - 19.50	16.0 - 18.0
	Nickel - % Ni	0.75 Min	3.50 - 5.50	8.0 - 10.50	10.0 - 14.0
	Nitrogen - % N		0.25 Max	0.10 Max	0.10 Max
Molybdenum - % Mo				2.00 - 3.00	
<b>Physical Properties</b>					
Molecular Structure		Ferritic	Austenitic	Austenitic	Austenitic
Density (Kilogram per Cubic Centimetre)		7750	7800	8000	8000
Modulus of elasticity (Giga Pascal)		200	197	193	193
Mean Coefficient of Thermal Expansion	0 - 100 Degree Celcius	10.4	15.7	17.2	15.9
	0 - 315 Degree Celcius	11	17.5	17.8	16.2
	0 - 538 Degree Celcius	11.4	18.4	18.4	17.5
<b>Electrical Properties</b>					
Magnetism		Magnetic	Non-Magnetic	Non-Magnetic	Non-Magnetic
Electrical Resistivity (NanoOhm Metre)		600	690	720	740
<b>Mechanical Properties</b>					
Ultimate Tensile Strength(Min)	Mega Pascal(Mpa)	450	515	515	515
Yield Strength(Min)	Mega Pascal(Mpa)	205	260	205	205
Elongation (% min)	in 50mm,	22	40	40	40
Hardness, Max	Rockwell B	183	217	201	217
	Brinell	89	95	92	95
<b>Corrosive Properties</b>					
Moderate Environments		Good Resistance	Good Resistance	Very Good Resistance	Excellent Resistance
Marine & Offshore Environments		Poor Resistance	Fair Resistance	Good Resistance	Very Good Resistance
Oxidising Environments		Fair Resistance	Fair Resistance	Fair Resistance	Very Good Resistance
Reducing Environments		Not Recommended for use	Not Recommended for use	Not Recommended for use	Good Resistance
<b>Applications</b>		Economic Bands & Buckles	Extra strong Bands & Buckles for construction and automotive	Bands & Buckles, Economical Cable Ties, Outdoor and harsher areas like Chemical plants, Food and Dairy industry	Cable ties, bands & buckles, Marking systems. Best in Class for all Harsh environments like Marine & Offshore applications.

## Great North Technologies Incorporated

[www.greatnorthtech.com](http://www.greatnorthtech.com) / [customerservice@greatnorthtech.com](mailto:customerservice@greatnorthtech.com)

**Customer Service;** 514-620-3724 / **Fax;** 514-620-3086 / **Sales;** 514-575-8044  
623 – 3484 Sources Boulevard, Dollard Des Ormeaux, Québec H9B 1Z9 Canada



**R-LOC® Product Certifications & Standards**

<b>Material Standards:</b>	AISI 201 Stainless Steel	(EN DIN 1.4371)
	AISI 304 Stainless Steel	(EN DIN 1.4301)
	AISI 316 Stainless Steel	(EN DIN 1.4401)
	AISI 403 Stainless Steel	(EN DIN 1.4024)
<b>Surface Finish(s):</b>	A) Metallic - High Grade Finish	
	B) Pure Polyester & Epoxy Coatings	
	C) PPA 571 ES (Performance Polymer Alloy) Thermoplastic Coating	
	D) PVC (Polyvinyl Chloride) Coating	
<b>Temperature Ranges:</b>	A) - 80°C to +500°C (uncoated)	
	B) - 80°C to +150°C (coated)	
<b>Flammability rating:</b>	Fireproof, Halogen free	
<b>Performance:</b>	UV & Salt Spray resistant	

**Certifications**

DET NORSKE VERITAS  
DNV # E-6729



Underwriters Laboratories  
UL # E-227552

ABS Class Type Approval



Lloyds Registered for Shipping Class



EU ROHS Compliant



**Quality Standards:**

ISO 9001:2000  
Certified Manufacturing



ISO 14001:2002  
Environment Friendly Plant

**Great North Technologies Incorporated**



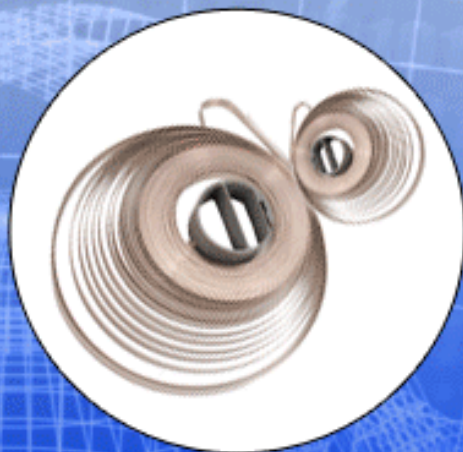
Clamping Solutions - For Demanding Applications



Approved Products



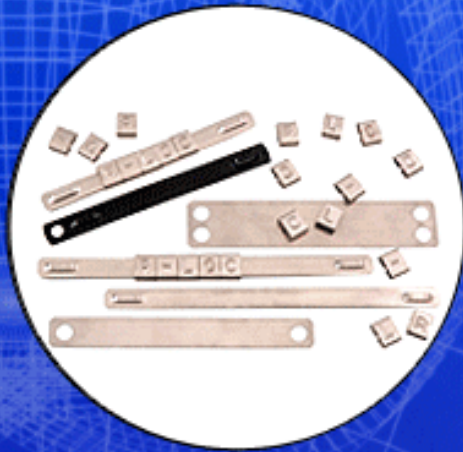
Stainless Steel Cable Ties



Stainless Steel  
Continuous Bands & Buckles



Worm Driven & Snap Fit Clamps



Marker Tags

**Raychem RPG Limited**

Joint Venture between Tyco Electronics - USA & RPG Enterprises India

<p>ISO-9001 : 2000 And ISO 14001 Certified Company</p>	<p>Ex-Stock Delivery &amp; ROHS Compliance</p>	<p>Variety of Materials and surface Coating</p>	<p>International Quality with competitive price</p>
--	--	---	---

**Great North Technologies Incorporated**

[www.greatnorthtech.com](http://www.greatnorthtech.com) / [customerservice@greatnorthtech.com](mailto:customerservice@greatnorthtech.com)

Customer Service; 514-620-3724 / Fax; 514-620-3086 / Sales; 514-575-8044  
623 – 3484 Sources Boulevard, Dollard Des Ormeaux, Québec H9B 1Z9 Canada