



# R-Loc<sup>®</sup>

One Stop Solution for all Clamping Requirements....



**Great North Technologies Incorporated**  
[www.greatnorthtech.com](http://www.greatnorthtech.com) / [customerservice@greatnorthtech.com](mailto:customerservice@greatnorthtech.com)  
**Customer Service;** 514-620-3724 / **Fax;** 514-620-3086 / **Sales;** 514-575-8044  
 623 – 3484 Sources Boulevard, Dollard Des Ormeaux, Québec H9B 1Z9 Canada

**R-LOC® Heritage**

Signals

Telecom

Sub-Sea

Utilities

Power Gen

Oil & Gas



**Shipping & Cargo**



**Transportation**



**Military**



Introduction	Page 1
Heritage	Page 2
Table of Content	Page 3
Product Description	Page 4

**Clamping Systems:**

Uncoated Strap - Plastic Totes	Page 5
--------------------------------	--------



Uncoated Strap – Cartons	Page 6
--------------------------	--------



PPA and PVC Coated Strap	Page 7
--------------------------	--------



**Buckles**

Jaw Type	Page 8
Wing Type	Page 8
Screw Type	Page 9



<b>Hand Tools</b>	Page 10
Tools Instructions	Page 11



Product Specifications	Page 12
Certifications & Standards	Page 13
R-LOC® Products	Page 14

**SPECIFICATIONS : STRAPS**

**RSU XX A - 506**

RAYCHEM STRAP

Surface Condition	Width, mm	Raw Material	Roll Length, m	Thickness, mm
C : Epoxy Coated	06 - 6.5	A : SS 430	25	4 - 0.4
U : Uncoated	09 - 9.5	B : SS 201	30	5 - 0.5
P : PPA Coated	10 - 10.0	E : SS 316	50	6 - 0.65
VP : PVC Coated	12 - 12.7	F : SS 304	61	7 - 0.7
	16 - 16.0			7-5 - 0.75
	19 - 19.0			
	20 - 20.0			

**R-LOC® Bands available in the following steel grades**

- Stainless Steel: AISI SS430 - General Applications
- Stainless Steel: AISI SS201 - High Tensile Strength
- Stainless Steel: AISI SS304 - Harsh Environments
- Stainless Steel: AISI SS316 - Corrosive Environments

**R-LOC® Band Product Description**

- Superior corrosion resistance
- Packed in plastic tote dispensers or carton boxes
- Totes available in 4 colour codes based on band widths.
- High tensile strength and quality with a superior finish

**Band Coating Options**

**PPA 571 Coated Bands for Highly Corrosive Applications:**

- Excellent adhesion to the metal substrate
- Excellent resistance to stress cracking on bending
- Also provides good abrasion and impact resistance
- PPA 571 is based on an alloy of acid modified Polyolefins.
- PPA 571 (Performance Polymer Alloy Coating) is a thermoplastic coating powder
- Specifically designed to provide a long lasting, tough coating for Stainless steel and Aluminum
- Resistant to adverse weather conditions, detergents, salt spray and typical airborne pollutants
- PPA 571 is halogen free and the combustion fumes are low in smoke and have a low toxicity index

**PVC (Polyvinyl Chloride) Coated Stainless Steel Straps From R-LOC:**

An effective thermoplastic polymer coating on SS316 with excellent chemical and mechanical resistance

**Benefits of PPA and PVC Coating:**

- Corrosion Resistance in Harsh Environments
- Excellent for Marine and Offshore Applications
- Superior Tensile Strengths
- Unmatched Safety in Oil & Gas and off shore rigs
- Ensures lasting protection from inter metal corrosion

**Properties of PPA and PVC Coating:**

- Excellent chemical resistance
- Low moisture absorption
- Good dimensional stability
- Self extinguishing
- Excellent bonding strength

**Great North Technologies Incorporated**

## Uncoated Bands

<b>Bands Packaged in Plastic Totes</b>										
Tote Color	Part No.	Material Grade	Tensile Strength (lbs)	Dimensions (mm)		Length	Tensile Strength (lbs)	Material Grade	Part No.	Tote Color
				Width	Thickness					
Red	RSU06B305T	SS201	500	6.5	0.5	100 ft.	400	SS316	RSU06E305T	Red
Red	RSU09B306-5T		900	9.5	0.65		750		RSU09E306-5T	Red
Red	RSU10B304		800	10	0.4	30 m	500		RSU10E304	Red
Red	RSU10B504					50 m			RSU10E504	Red
Red	RSU10B307		1200	0.7	30 m	900	RSU10E307		Red	
Red	RSU10B507				50 m		RSU10E507		Red	
Yellow	RSU12B307-5T		1500	12.7	0.75	100 ft.	1200		RSU12E307-5T	Yellow
Grey	RSU16B307-5T		1875	16			1500		RSU16E307-5T	Grey
Blue	RSU19B307-5T		2250	19			1800		RSU19E307-5T	Blue
Blue	RSU20B304		1500	20	0.4	30 m	1200		RSU20E304	Blue
Blue	RSU20B504					50 m			RSU20E504	Blue
Blue	RSU20B307		2300	0.7	30 m	1800	RSU20E307		Blue	
Blue	RSU20B507				50 m		RSU20E507		Blue	
Red	RSU06F305T		SS304	375	6.5	0.5	100 ft.		375	SS430
Red	RSU09F306-5T	700		9.5	0.65	700		RSU09A306-5T	Red	
Red	RSU10F304	475		10	0.4	30 m	475	RSU10A304	Red	
Red	RSU10F504					50 m		RSU10A504	Red	
Red	RSU10F307	750		0.7	30 m	750	RSU10A307	Red		
Red	RSU10F507				50 m		RSU10A507	Red		
Yellow	RSU12F307-5T	1100		12.7	0.75	100 ft.	1100	RSU12A307-5T	Yellow	
Grey	RSU16F307-5T	1400		16			1400	RSU16A307-5T	Grey	
Blue	RSU19F307-5T	1700		19			1700	RSU19A307-5T	Blue	
Blue	RSU20F304	1000		20	0.4	30 m	1000	RSU20A304	Blue	
Blue	RSU20F504					50 m		RSU20A504	Blue	
Blue	RSU20F307	1500		0.7	30 m	1500	RSU20A307	Blue		
Blue	RSU20F507				50 m		RSU20A507	Blue		



## Uncoated Bands

<b>Bands Packaged in Corrugated Boxes</b>								
Part No.	Material Grade	Tensile Strength (lbs)	Dimensions (mm)		Length (meters)	Tensile Strength (lbs)	Material Grade	Part No.
			Width	Thickness				
RSU06B305C	<b>SS201</b>	500	6.5	0.5	30.5	400	<b>SS316</b>	RSU06E305C
RSU06B615C					61			RSU06E615C
RSU09B306-5C		900	9.5	0.65	30.5	750		RSU09E306-5C
RSU09B616-5C					61			RSU09E616-5C
RSU12B307-5C		1500	12.7	0.75	30.5	1200		RSU12E307-5C
RSU12B617-5C					61			RSU12E617-5C
RSU16B307-5C		1875	16	0.75	30.5	1500		RSU16E307-5C
RSU16B617-5C					61			RSU16E617-5C
RSU19B307-5C		2250	19	0.75	30.5	1800		RSU19E307-5C
RSU19B617-5C					61			RSU19E617-5C
RSU06F305C	<b>SS304</b>	375	6.5	0.5	30.5	375	<b>SS430</b>	RSU06A305C
RSU06F615C					61			RSU06A615C
RSU09F306-5C		700	9.5	0.65	30.5	700		RSU09A306-5C
RSU09F616-5C					61			RSU09A616-5C
RSU12F307-5C		1100	12.7	0.75	30.5	1100		RSU12A307-5C
RSU12F617-5C					61			RSU12A617-5C
RSU16F307-5C		1400	16	0.75	30.5	1400		RSU16A307-5C
RSU16F617-5C					61			RSU16A617-5C
RSU19F307-5C		1700	19	0.75	30.5	1700		RSU19A307-5C
RSU19F617-5C					61			RSU19A617-5C



**PPA 571 & PVC Coated Bands  
for Highly Corrosive Applications**

**Bands Packaged in Corrugated Boxes**

Coating Type	Part No.	Material Grade	Dimensions (mm)		Tensile Strength (lbs)	Length (meter)	Material Grade	Part No.
			Width	Thickness				
Polymer	RSP06F254C	SS304	6.5	1.1	335	25	SS316	RSP06E254C
Polymer	RSP09F254C		9.5		505			RSP09E254C
Polymer	RSP12F254C		12.7		670			RSP12E254C
PVC	RSVP12F254		16		840			RSVP12E254
PVC	RSVP16F254				840			RSVP16E254
Polymer	RSP16F254C				1000			RSP16E254C
Polymer	RSP19F254C				19			1000

**Bands Packaged in Plastic Totes**

Coating Type	Part No.	Material Grade	Dimensions (mm)		Tensile Strength (lbs)	Meters Length	Material Grade	Part No.	Tote Colour
			Width	Thickness					
Polymer	RSP06F254T	SS304	6.5	1.1	335	25	SS316	RSP06E254T	Red
Polymer	RSP09F254T		9.5		505			RSP09E254T	
Polymer	RSP12F254T		12.7		670			RSP12E254T	Yellow
Polymer	RSP16F254T		16		840			RSP16E254T	Grey
Polymer	RSP19F254T		19		1000			RSP19E254T	Blue



**Great North Technologies Incorporated**

## Buckles for Bands

<b>Jaw and Wing Type Buckles</b>							
<b>Part No.</b>		<b>Type</b>	<b>Steel Grade</b>	<b>Width (mm)</b>	<b>Type</b>	<b>Part No.</b>	
<b>Uncoated</b>	<b>Coated</b>					<b>Coated</b>	<b>Uncoated</b>
RCU06BJ	RCC06BJ	Jaw	SS201	6.5	Wing	RCC06BW	RCU06BW
RCU09BJ	RCC09BJ			9.5		RCC09BW	RCU09BW
RCU10BJ	RCC10BJ			10		RCC10BW	RCU10BW
RCU12BJ	RCC12BJ			12.7		RCC12BW	RCU12BW
RCU16BJ	RCC16BJ			16		RCC16BW	RCU16BW
RCU19BJ	RCC19BJ			19		RCC19BW	RCU19BW
RCU20BJ	RCC20BJ			20		RCC20BW	RCU20BW
RCU06FJ	RCC06FJ	Jaw	SS304	6.5	Wing	RCC06FW	RCU06FW
RCU09FJ	RCC09FJ			9.5		RCC09FW	RCU09FW
RCU10FJ	RCC10FJ			10		RCC10FW	RCU10FW
RCU12FJ	RCC12FJ			12.7		RCC12FW	RCU12FW
RCU16FJ	RCC16FJ			16		RCC16FW	RCU16FW
RCU19FJ	RCC19FJ			19		RCC19FW	RCU19FW
RCU20FJ	RCC20FJ			20		RCC20FW	RCU20FW
RCU06EJ	RCC06EJ	Jaw	SS316	6.5	Wing	RCC06EW	RCU06EW
RCU09EJ	RCC09EJ			9.5		RCC09EW	RCU09EW
RCU10EJ	RCC10EJ			10		RCC10EW	RCU10EW
RCU12EJ	RCC12EJ			12.7		RCC12EW	RCU12EW
RCU16EJ	RCC16EJ			16		RCC16EW	RCU16EW
RCU19EJ	RCC19EJ			19		RCC19EW	RCU19EW
RCU20EJ	RCC20EJ			20		RCC20EW	RCU20EW
<b>(100 pcs / box)</b>							



**Great North Technologies Incorporated**



## Buckles & Brackets for Bands

<b>Screw Type Buckles</b>			
<b>Part No.</b>			<b>Width (mm)</b>
<b>SS201</b>	<b>SS304</b>	<b>SS316</b>	
RCU06BS	RCC06FS	RCC06ES	6.5
RCU09BS	RCC09FS	RCC09ES	9.5
RCU10BS	RCC10FS	RCC10ES	10
RCU12BS	RCC12FS	RCC12ES	12.7
RCU16BS	RCC16FS	RCC16ES	16
RCU19BS	RCC19FS	RCC19ES	19
RCU20BS	RCC20FS	RCC20ES	20

**(100 pcs / box)**



<b>Brackets for Signals and Signs</b>					
<b>Name</b>	<b>Leg Type</b>	<b>Hardware Description</b>	<b>Part No.</b>	<b>Strap Size (mm)</b>	<b>Steel Grade</b>
<b>Mini Bracket</b>	Straight	Less Hardware	RM12MS	<b>12.7</b>	<b>SS201</b>
		M8 Bolt & Washer	RM12MSA		
	Flared	Less Hardware	RM12MF		
		M8 Bolt & Washer	RM12MFA		
<b>Single Bolt Bracket</b>	Straight	Less Hardware	RM19SS	<b>19</b>	
		M8 Bolt & Washer	RM19SSA		
	Flared	Less Hardware	RM19SF		
		M8 Bolt & Washer	RM19SFA		
<b>Two Bolt Bracket</b>	Straight	Less Hardware	RM19TS		
		M8 Bolt & Washer	RM19TSA		

**50 Pcs / Box**

Brackets are tapped for your convenience to allow for installation without using a nut in order to decrease installation times.  
**RM12** (Mini) brackets are typically used for mounting signs on posts of 4" diameter or smaller.  
**RM19** brackets are typically used for mounting signs on posts of 4" diameter or larger.



**Great North Technologies Incorporated**

**Tools for R-LOC® Products**

Part No.	Description	Application	PN Series
RR-G01	Automatic Cable Tie Gun	Cable Ties	B, L & R
RR-P02	Cable Tensioning Pliers		
RR-H05	Cable Tie Hook		
RR-B04	Bantam Tool	Pre-Cut Straps	RC, PJ & PW
RR-T03	Buckle Crimping Tool	Buckles	RC
	Band Ratchet & Cutting Tool	Bands	RS
RR-R06	Ratchet Tool	Bands & Straps	

**RR-G01 Cable Tie Automatic Gun.**

- Easy to install automatic gun, with single hand operation.
- Cable tie side entry for immediate positioning of tie & tool.
- Controlled tension & fully adjustable to achieve desired tension.
- Easy and automatic removal of excess tie length with auto cut-off.

**RR-P02 Cable Tensioning Pliers**

- Cable tie side entry for immediate positioning of tie & tool.
- Hand operated tool with installer controlled tension and cut-off.
- Easy removal of excess tie length.
- Lever actuated cut-off.
- Rugged, lightweight, easy to operate providing a mechanical advantage.

**RR-T03 Band ratchet and cutting / Buckle crimping Tool.**

- Features a spring-loaded gripper lever for more efficient band handling.
- Easy to use spindle handle to ratchet band through buckle.
- Cut-off Lever is vinyl coated for easy cutting of band.

**RR-B04 Bantam Auto Gun Tool.**

- Light weight gun handle configuration to tighten Strap or Tie.
- Cut-off Lever for easy cutting of Strap or Tie.

**RR-H05 Cable Tie Hook.**

- Used as a hand tool to tighten B, L & R Series Cable Ties.
- Insert hook into hole at end of tie and pull.

**RR-R06 Ratchet Tool.**

- Multipurpose heavy duty ratchet for Bands and Straps.

RR-G01



RR-P02



RR-T03



RR-B04



RR-H05

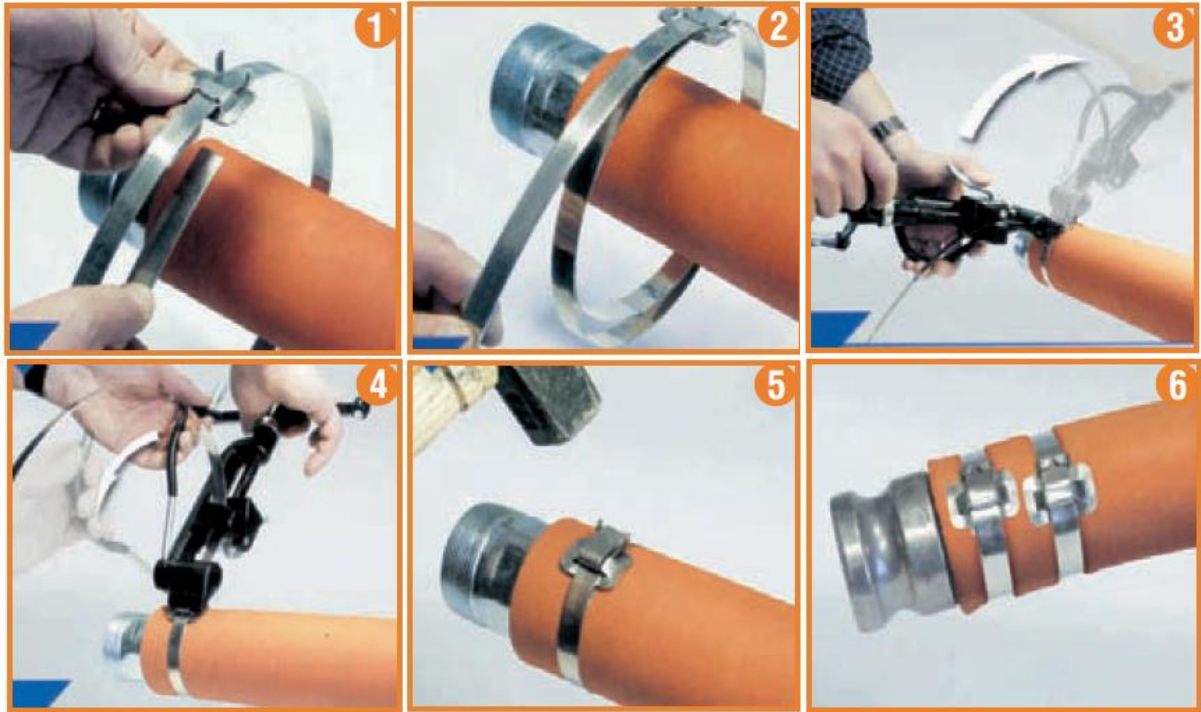


RR-R06



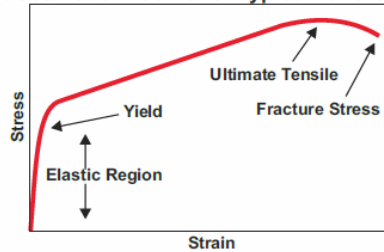
**Great North Technologies Incorporated**

## Clamping System Band & Buckle Application and Installation Instructions



- 1) Pull Buckle on band, ears pointing towards end of band. Form the clamp, holding band on band. Then push the buckle back over the doubled band, bending the end around 1" under the buckle.
- 2) Double wrap the band for a heavier job.
- 3) Place the band in the tool, push down on the gripper with the thumb, and tension the clamp by turning the handle. The maximum tension is achieved when the band finally stops moving through the buckle. Once the required tension has been applied, roll the tool over the buckle and simultaneously, reverse the handle carefully through half a turn to avoid snapping or breakage. There is no loss of tension if the handle is reversed very little.
- 4) Pull on the cutter lever ensuring that the band is cut off at the correct length.
- 5) Hold the stub of the band with the thumb and hammer it flat over the bridge of the buckle. Complete the clamp formation by hammering the ears over the stub.
- 6) Desired Result as shown above.

Stress - Strain Curve for Typical Tensile Test



AISI Type Number		SS 430	SS 201	SS 304	SS 316
<b>Specification - Equivalents</b>	UNS	S4300	S20100	S30400	S31600
	BS	430S17	301S21	304S31	316S31
	Euronorm	W. No: 1.4016 Name: X8 Cr17	W. No: 1.4310 Name: X10CrNi18-8	W. No: 1.4301 Name: X5CrNi18-10	W.No: 1.4401 Name: X5CrNiMo17-12-2
	Swedish	SS2320	SS2331	SS2332	SS2347
	JIS	SUS430	SUS201	SUS304	SUS316
<b>Composition</b>	Carbon - % C	0.12 Max	0.15 Max	0.07 Max	0.08 Max
	Manganese - % Mn	1.00 Max	5.5 - 7.5	2.00 Max	2.00 Max
	Phosphorous - % P	0.04 Max	0.06 Max	0.045 Max	0.045 Max
	Silicon - % Si	1.00 Max	1.00 Max	0.75 Max	0.75 Max
	Sulphur - S	0.03 Max	0.03 Max	0.03 Max	0.03 Max
	Chromium - % Cr	16.00 - 18.00	16.00 - 18.00	17.50 - 19.50	16.0 - 18.0
	Nickel - % Ni	0.75 Min	3.50 - 5.50	8.0 - 10.50	10.0 - 14.0
	Nitrogen - % N		0.25 Max	0.10 Max	0.10 Max
Molybdenum - % Mo				2.00 - 3.00	
<b>Physical Properties</b>					
Molecular Structure		Ferritic	Austenitic	Austenitic	Austenitic
Density (Kilogram per Cubic Centimetre)		7750	7800	8000	8000
Modulus of elasticity (Giga Pascal)		200	197	193	193
Mean Coefficient of Thermal Expansion	0 - 100 Degree Celcius	10.4	15.7	17.2	15.9
	0 - 315 Degree Celcius	11	17.5	17.8	16.2
	0 - 538 Degree Celcius	11.4	18.4	18.4	17.5
<b>Electrical Properties</b>					
Magnetism		Magnetic	Non-Magnetic	Non-Magnetic	Non-Magnetic
Electrical Resistivity (NanoOhm Metre)		600	690	720	740
<b>Mechanical Properties</b>					
Ultimate Tensile Strength(Min)	Mega Pascal(Mpa)	450	515	515	515
Yield Strength(Min)	Mega Pascal(Mpa)	205	260	205	205
Elongation (% min)	in 50mm,	22	40	40	40
Hardness, Max	Rockwell B	183	217	201	217
	Brinell	89	95	92	95
<b>Corrosive Properties</b>					
Moderate Environments		Good Resistance	Good Resistance	Very Good Resistance	Excellent Resistance
Marine & Offshore Environments		Poor Resistance	Fair Resistance	Good Resistance	Very Good Resistance
Oxidising Environments		Fair Resistance	Fair Resistance	Fair Resistance	Very Good Resistance
Reducing Environments		Not Recommended for use	Not Recommended for use	Not Recommended for use	Good Resistance
<b>Applications</b>		Economic Bands & Buckles	Extra strong Bands & Buckles for construction and automotive	Bands & Buckles, Economical Cable Ties, Outdoor and harsher areas like Chemical plants, Food and Dairy industry	Cable ties, bands & buckles, Marking systems. Best in Class for all Harsh environments like Marine & Offshore applications.

## Great North Technologies Incorporated

[www.greatnorthtech.com](http://www.greatnorthtech.com) / [customerservice@greatnorthtech.com](mailto:customerservice@greatnorthtech.com)

**Customer Service;** 514-620-3724 / **Fax;** 514-620-3086 / **Sales;** 514-575-8044  
623 – 3484 Sources Boulevard, Dollard Des Ormeaux, Québec H9B 1Z9 Canada

**R-LOC® Product Certifications & Standards**

<b>Material Standards:</b>	AISI 201 Stainless Steel	(EN DIN 1.4371)
	AISI 304 Stainless Steel	(EN DIN 1.4301)
	AISI 316 Stainless Steel	(EN DIN 1.4401)
	AISI 403 Stainless Steel	(EN DIN 1.4024)
<b>Surface Finish(s):</b>	A) Metallic - High Grade Finish	
	B) Pure Polyester & Epoxy Coatings	
	C) PPA 571 ES (Performance Polymer Alloy) Thermoplastic Coating	
	D) PVC (Polyvinyl Chloride) Coating	
<b>Temperature Ranges:</b>	A) - 80°C to +500°C (uncoated)	
	B) - 80°C to +150°C (coated)	
<b>Flammability rating:</b>	Fireproof, Halogen free	
<b>Performance:</b>	UV & Salt Spray resistant	

**Certifications**

DET NORSKE VERITAS  
DNV # E-6729



Underwriters Laboratories  
UL # E-227552

ABS Class Type Approval



Lloyds Registered for Shipping Class



EU ROHS Compliant



**Quality Standards:**

ISO 9001:2000  
Certified Manufacturing



ISO 14001:2002  
Environment Friendly Plant

**Great North Technologies Incorporated**

www.greatnorthtech.com / customerservice@greatnorthtech.com  
**Customer Service;** 514-620-3724 / **Fax;** 514-620-3086 / **Sales;** 514-575-8044  
 623 – 3484 Sources Boulevard, Dollard Des Ormeaux, Québec H9B 1Z9 Canada



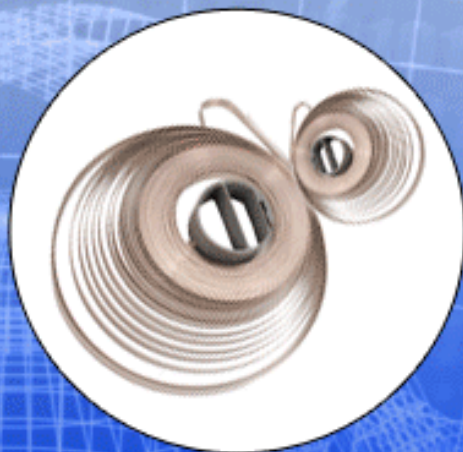
Clamping Solutions - For Demanding Applications



Approved Products



Stainless Steel Cable Ties



Stainless Steel  
Continuous Bands & Buckles



Worm Driven & Snap Fit Clamps



Marker Tags

**Raychem RPG Limited**

Joint Venture between Tyco Electronics - USA & RPG Enterprises India

<p>ISO-9001 : 2000 And ISO 14001 Certified Company</p>	<p>Ex-Stock Delivery &amp; ROHS Compliance</p>	<p>Variety of Materials and surface Coating</p>	<p>International Quality with competitive price</p>
--	--	---	---

**Great North Technologies Incorporated**

[www.greatnorthtech.com](http://www.greatnorthtech.com) / [customerservice@greatnorthtech.com](mailto:customerservice@greatnorthtech.com)

Customer Service; 514-620-3724 / Fax; 514-620-3086 / Sales; 514-575-8044  
623 – 3484 Sources Boulevard, Dollard Des Ormeaux, Québec H9B 1Z9 Canada